



QLD Licence: 15142595

# GRANNY FLATS



Maximum 60m<sup>2</sup> - *Dual Living* - *Stock Designs*



NSW Licence: 238408C





Licence No: 238408C



# Domus no 1

This Design is for a narrow site where the Living room Glazed Wall faces toward the north

This Design complies as a Granny Flat

A Graceful and Fully Equipped One Bedroom Home, Domus has a raked ceiling in the Living Spaces. Domus features a full sized Kitchen, a Walk in Robe, plenty of storage and a Bedroom fit for a King (bed)

STOCK Plan

All Plans Copyright 2023

Licence NSW: 238408C QLD: 15142595



Raked Ceiling and Timber Vinyl Flooring



# Domus no 1

Includes:

A Full Size Kitchen

and a

Potential loft Space

Internal Floor Area: 60 m<sup>2</sup>

- Window Glass splashback,
- Island Bench, Stone Tops,
- Drawer (soft close) systems under bench Oven
- Overhead Cupboards,
- European Appliances,
- Full height Pantry,
- Room for, and Water to, a 2 door Fridge Space







2.7 m High Ground Floor Ceilings

# Habitat

Model 1, 1 bedroom



A **SECONDARY Dwelling** with luxurious space and light.



Floor Area: 57. m2

Length: 13.0 m

Width: 4.4 m

Internal Area : 48 m2

GROUND FLOOR

STOCK PLAN

All Plans Copyright 2023



NSW Licence: 238408C QLD Licence 15142595



Space and Light with High Ceilings



# Habitat

Model 1, 1 bedroom

This Design is a genuine 'home' with all facilities including space for a Queen sized bed, full size two door fridge dishwasher, a separate Pantry with laundry and a study nook.

The Patio area is wide and deep allowing space for outdoor seating or a table.

A Carport or Garage is optional.





2.6 m High Ground Floor Ceilings

# Lucy

Model 1, 2 bedroom



A **SECONDARY Dwelling** with luxurious space and light.



Floor Area: 74. m2

Length: 15.4 m

Width: 5.6 m

Internal Area : 60 m2

GROUND FLOOR

STOCK PLAN

All Plans Copyright 2023



NSW Licence: 238408C QLD Licence 15142595



Space and Light with High Ceilings



# Lucy

Model 1, 2 bedroom

This Design is a genuine 'home' with all facilities including space for Queen sized beds, full size two door fridge dishwasher, a separate laundry and an Entry hall.

The Patio area is wide and deep allowing space for an outdoor kitchen and seating or table.

A Carport or Garage is optional.





# Kara

1, 2 bedroom

**An ENVIRO-SOLAR Home**

**Utilising our ENERGY PACK technologies**

- Home Solar Power System: 3kw > 10kw
- Reduced Air Loss = Reduced Energy Use, by Improving air seals in the building 'wrap'
- Thermal mass and controlled air / sun access
- Special reflective and conductive insulations.



All Plans Copyright 2023



# Kara

1, 2 bedroom

Kara is a 64 m<sup>2</sup> home. And complies as a Granny Flat in NSW as well as in QLD

Kara is a 'Real' home, that can be built as a Permanent Home,

complying as it does with the Building Code of Australia, [see also: Kara 3 and 4 bedroom models](#)



Total Area: 64 m<sup>2</sup>  
Internal Area: 56 m<sup>2</sup>  
Length: 8.9 m  
Width: 6.7 m

Kara has High ceilings, Is insulated, and has cross flow ventilation.

Kara comes with built in appliances, all fixtures, fittings and solar power

STOCK Plan

an stey  
homes

All Plans Copyright 2023



Kara

1, 2 bedroom





# SERVICES HUB

## TYPE ONE

PANTRY

DINNERWARE

GLASSES

MUGS

STORAGE BINS

DUCTED RANGEHOOD

INTEGRATED LED LIGHTING

MIXER TAP

4 BURNER COOKTOP

FREEZER

WASHER / DRYER

TWO SINK TUBS

CUTLERY

FRIDGE

CLEANING WASTE BINS

OVEN

IMPLEMENTS

FCTS







'Industrial' but a CLASS ACT

# Sailfish

Model 1, 2 bedroom

This Design .is perfect for a home  
with office that can be used on  
occasion as a second bedroom





# Sailfish

Model 1, 2 bedroom



A Choice of Roof Styles, Skillion or Gable, is available  
Room for a large 2 door fridge

Net Floor Area: 60 m<sup>2</sup>

An ENVIRO-SOLAR Home

Utilising our ENERGY PACK technologies

- Home Solar Power System: 3kw > 10kw
- Reduced Air Loss = Reduced Energy Use, by Improving air seals in the building 'wrap'
- Thermal mass and controlled air / sun access
- Special reflective and conductive insulations.
- Hot Water Powered from the Solar Array

GROUND FLOOR

Licence NSW: 238408C QLD: 10 14208F



STOCK Plan



All Plans Copyright 2023



# Lismore

Model 2, 2 bedroom



2.6 m High Ground Floor Ceilings

A Secondary Dwelling addition located on the laneway access of an existing Traditional Home.



GROUND FLOOR

Area: 71 m<sup>2</sup>

Internal Area: 60 m<sup>2</sup>

Length: 8,4 m

Width: 4,4 m

Licence NSW: 238408C QLD: 15142595



STOCK Plan

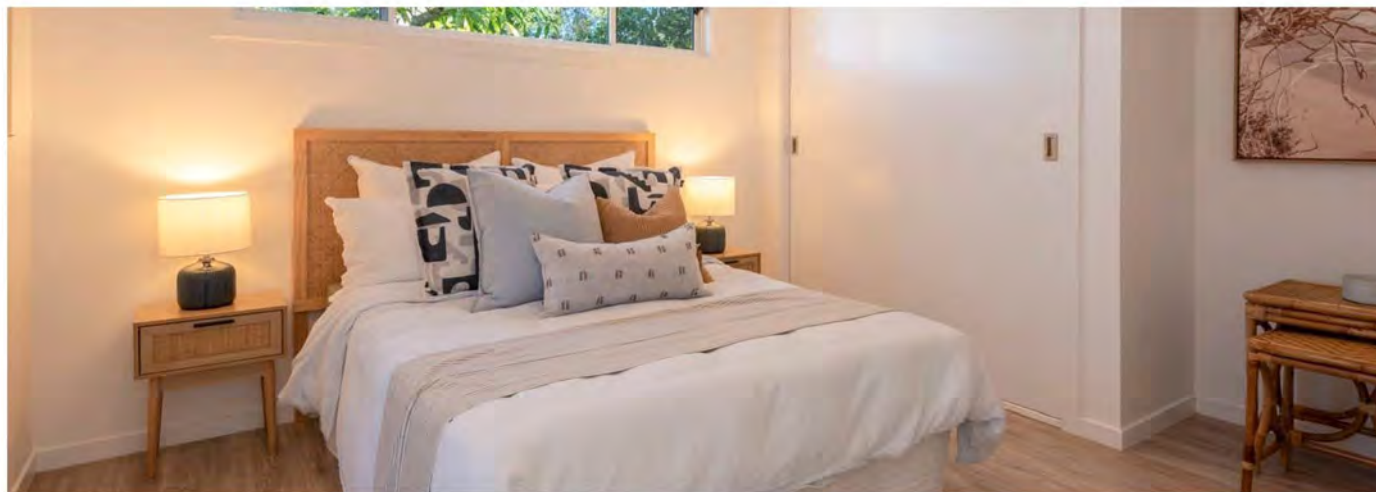


All Plans Copyright 2023





STOCK PLAN



NSW Licence No: 238408C QLD Licence 15142595

# Lismore

Model 2, 2 bedroom

An ENVIRO-SOLAR Home

Home Solar Power System: 6 kw. Array

Reduced Air Loss = Reduced Energy Use,  
by creating air seals in the building 'wrap'

Thermal mass and controlled air / sun access

Special reflective and conductive insulations.

Hot Water Powered from the Solar Array



# Domus

Model 2, 2 bedroom



2.6 m High Ground Floor Ceilings

A Comfortable 2 bed Home with High ceilings and Lots of Light  
 Fits Queen or King Bed  
 2nd Queen Bedroom or Study  
 What more can we say....?



GROUND FLOOR

Area: 70. m<sup>2</sup>  
 Internal Area: 60. m<sup>2</sup>  
 Length: 8.6 m  
 Width: 7.2 m  
 Lot Width: 10.0 m  
 Lot Depth: 20.0 m

Licence NSW: 238408C QLD: 15142595



STOCK Plan



All Plans Copyright 2023





# Cotton

Model 1, 2 bedroom



**MODULAR** Pavilions ... Add ON SYSTEM

2.6 m High Ground Floor Ceilings

Licence NSW: 238408C QLD: 15142595



GROUND FLOOR

By adding a Bedroom Module this version becomes a substantial Home  
 A Choice of Roof Styles : Flat' Skillion or Gable are available  
 A Pergola and Carport are options

Area: 76 m<sup>2</sup>  
 Internal Area: 60 m<sup>2</sup>  
 Length: 8.9 m  
 Width: 9.2 m  
 Lot Width: 9.2 m  
 Lot Depth: 16.7 m



STOCK Plan



All Plans Copyright 2023



2.6 m High Ground Floor Ceilings

# Brunswick

Model 2, 2 bedroom



A Secondary Dwelling addition located on the laneway access of an existing Traditional Home in a village setting.



Area: 75 m<sup>2</sup>  
 Internal Area: 60 m<sup>2</sup>  
 Length: 16.2 m  
 Width: 10.2 m  
 Lot Width: 11.8 m  
 Lot Depth: 18.0 m

GROUND FLOOR

Licence NSW: 238408C QLD: 1514259F



STOCK Plan



All Plans Copyright 2023



# Beach Bure

Model 1, 3 bedroom



A Practical 3 bedroom Home with 2 bathrooms, High Ceilings and LED Lights Bi-Folds, and Porch Deck are options. Bedroom 1 shown with Queen size bed Second bed is shown with a Double size Third or Study with a convertible couch

Area: 75 m<sup>2</sup>  
 Internal Area: 60 m<sup>2</sup>  
 Length: 8.9 m  
 Width: 9.5 m  
 Lot Width: 11.3m  
 Lot Depth: 16.5 m



2.6 m High Ground Floor Ceilings



GROUND FLOOR





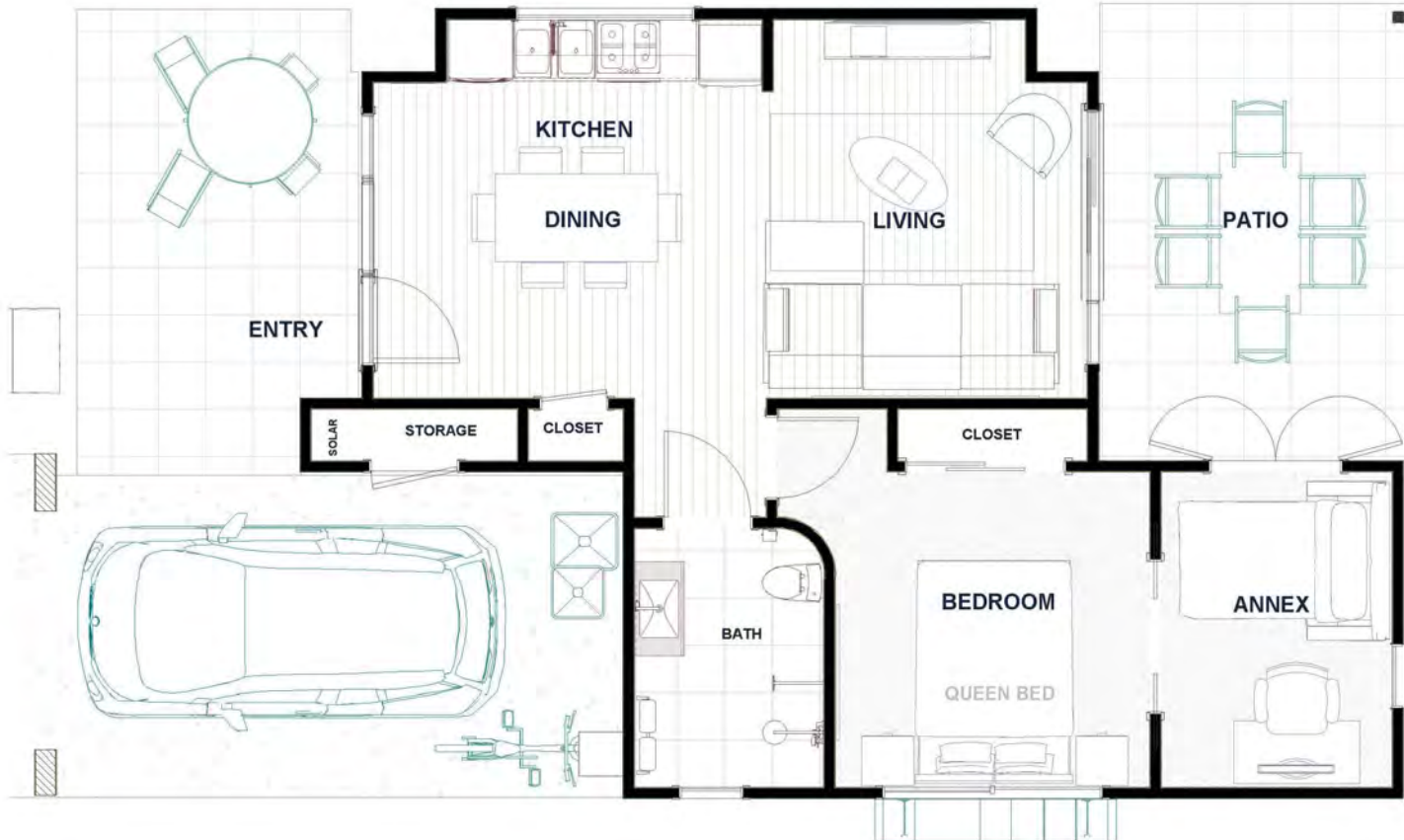
# Noosa

Model 4, 1 bed + A



# Noosa

Model 4, 1 bed + A



Area: 83.0 m<sup>2</sup>  
G.F.A: 54.0 m<sup>2</sup>  
Length: 13.0 m  
Width: 7.5 m  
Lot Width: 9.4 m  
Lot Depth: 20.0 m

High 2.6m Ceilings





# Noosa

Model 3.1

An ENVIRO-SOLAR Home

Utilising our ENERGY PACK technologies

- Home Solar Power System: 3kw > 10kw
- Reduced Air Loss = Reduced Energy Use, by Improving air seals in the building 'wrap'
- Thermal mass and controlled air / sun access
- Special reflective and conductive insulations.
- Hot Water Powered from the Solar Array



# Noosa

Model 3.1A

An ENVIRO-SOLAR Home

Utilising our ENERGY PACK technologies

- Home Solar Power System: 3kw > 10kw
- Reduced Air Loss = Reduced Energy Use, by Improving air seals in the building 'wrap'
- Thermal mass and controlled air / sun access
- Special reflective and conductive insulations.
- Hot Water Powered from the Solar Array





# Banqalow



farm house

Model 1, 2 bedroom





# Banqalow

Model 1, 2 bedroom



Area: 89.0 m<sup>2</sup>  
G.F.A: 60.0 m<sup>2</sup>  
Length: 10.4 m  
Width: 9.5 m  
Lot Width: 11.5 m  
Lot Depth: 18.0 m

A Traditional Farmhouse with 2.7m ceilings, built just as we have built for over 30 years.  
It Can be built on a Timber (Bearer and Joists) platform or on a Raised Concrete Slab





# Banqatow

Model 1, 2 bedroom







# Banqalow

Model 1, 2 bedroom

An ENVIRO-SOLAR Home

Utilising our ENERGY PACK technologies

- Home Solar Power System: 3kw > 10kw
- Reduced Air Loss = Reduced Energy Use, by Improving air seals in the building 'wrap'
- Thermal mass and controlled air / sun access
- Special reflective and conductive insulations.
- Hot Water Powered from the Solar Array





## Anstey Homes

Nth NSW

[www.ansteyhomes.com](http://www.ansteyhomes.com)

Ph: 0266809333 m:0455039675

m:0428666425



### PLANS in this Brochure

Are Free of charge to  
'not for profit' housing

and

for Individuals 'In need'

*Contact us for Details of this offer*