

Not So TINY

Micro Homes

Collection



'Affordable homes' by design





From our **Granny Flats** brochure



From our **Affordable Homes Project** brochure



From our **Homes for Small Sites** brochure



Unlike **Tiny Homes**

Anstey Micro Homes (less than 50m² internal area)

are **Real** Homes

They meet the requirements of the Building Code of Australia and can be built as **Permanent** Homes.

Anstey Micro Homes are:

- cost effective, well built, well finished,
- and environmentally conscious.

'No need for an expensive chassis, wheels and floor system'

These Homes be built using a thermal mass concrete floor

Thereby stabilizing internal temperatures and reducing energy consumption.

Anstey Homes: offers **Modular Homes** that can be expanded to accommodate growing families and other household groups.

and *'you want more?'*

A range of small homes, (from 50 >180 m² internal Area)

In our **Granny Flats** and **Affordable Homes** brochures





Cassie

1, 1 bedroom

Cassie has High ceilings, Is insulated, and has cross flow ventilation.

Cassie comes with built in appliances, all fixtures, fittings and solar power

Cassie can be built modular or transportable with a raised Timber floor

All Plans Copyright 2023

Cassie is a 29 m² home. This is in the 'Tiny' home (size) category
 And yet, Cassie is a 'Real' home, that can be built as a Permanent Home,
 complying with the Building Code of Australia

Cassie

1, 1 bedroom



HIGH CEILINGS 2.6m



Total Area: 29 m²
 Internal Area: 26 m²
 Length: 6.2 m
 Width: 4.8 m

STOCK Plan



All Plans Copyright 2023



STORAGE BINS

DINNERWARE GLASSES MUGS

DUCTED RANGEHOOD

Microwave

INTEGRATED LED LIGHTING

PANTRY

MIXER TAP

TWO SINK TUBS

2 BURNER COOKTOP

WASHER DRYER

TELEVISION

CORNER BOOTH

CLEANING

CUTLERY

STORAGE UNDER

WASTE BINS

IMPLEMENTS

FREEZER

FRIDGE

Micro

SERVICES HUB

TYPE TWO

STORAGE BINS





Mila

1. 1 bedroom

Mila has High ceilings, Is insulated, and has cross flow ventilation.

Mila comes with built in appliances, all fixtures, fittings and solar power

Mila Can be built raised, on timber Joists with Timber vinyl flooring



Mila is a **30m²** home. Again this is also in the 'Tiny' home (size) category
And yet, Mila is a 'Real' home, that can be built as a Permanent Home,
complying with the Building Code of Australia



Mila

1. | bedroom



Total Area: 39 m²
Internal Area: 30 m²
Length: 6.2 m
Width: 5.0 m

STOCK Plan



All Plans Copyright 2023



Mila
1.1



Mila
1.1

Micro

SERVICES HUB

TYPE one





Bure

1. 1 bedroom

Bure has High ceilings, Is insulated,
and has cross flow ventilation.



Bure is a 24 m² home. This is also in the 'Tiny' home (size) category
 And yet, Bure is a 'Real' home, that can be built as a Permanent Home,
 Complying, as it does, with the Building Code of Australia

Bure

1, 1 bedroom



HIGH CEILINGS 2.6m



Total Area: 24 m²
 Internal Area: 24 m²
 Length: 7.2 m
 Width: 3.6 m

* Excludes Patios

STOCK Plan



All Plans Copyright 2023



Bure

1, 2 bedroom

Bure has High ceilings, Is insulated, and has cross flow ventilation.



Bure is a 48 m² home. This is also in the 'Tiny' home (size) category
And yet, Bure is a 'Real' home, that can be built as a Permanent Home,
Complying, as it does, with the Building Code of Australia

Bure

1, 2 bedroom



HIGH CEILINGS 2.6m

Total Area: 48 m²
Internal Area: 45 m²
Length: 11.2 m
Width: 5.9 m

STOCK Plan



All Plans Copyright 2023



Cassie

2, 1 bedroom

An ENVIRO-SOLAR Home

Utilising our ENERGY PACK technologies

- Home Solar Power System: 3kw > 10kw
- Reduced Air Loss = Reduced Energy Use, by Improving air seals in the building 'wrap'
- Thermal mass and controlled air / sun access
- Special reflective and conductive insulations.
- Hot Water Powered from the Solar Array



All Plans Copyright 2023

Cassie is a **36 m²** home. This is still in the 'Tiny' home (size) category
 And yet, Cassie is a 'Real' home, that can be built as a Permanent Home,
 complying with the Building Code of Australia

Cassie

2, 1 bedroom



HIGH CEILINGS 2.6m



Total Area: 59 m²
 Internal Area: 36 m²
 Length: 6.2 m
 Width: 6.9 m

Cassie has High ceilings, Is insulated, and has cross flow ventilation.
 Cassie comes with built in appliances, all fixtures, fittings and solar power



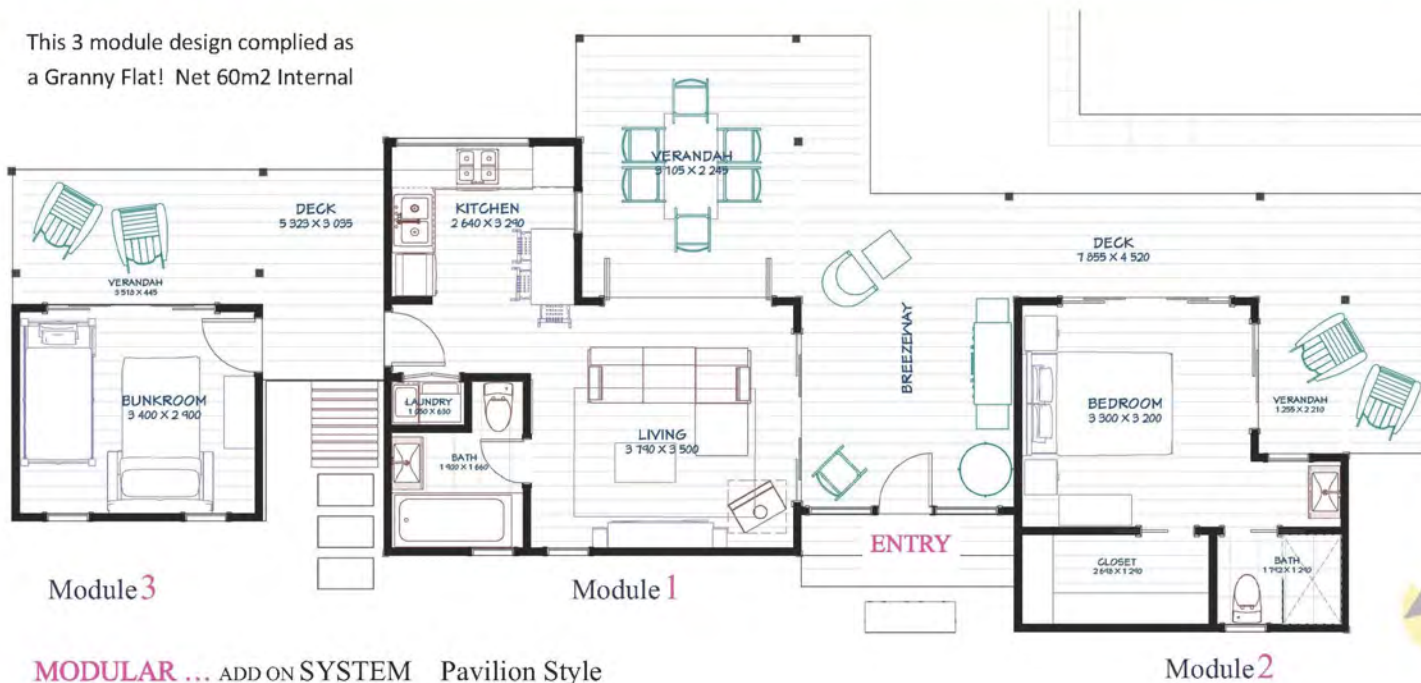
STOCK Plan



All Plans Copyright 2020



This 3 module design complied as a Granny Flat! Net 60m2 Internal



Surf Shack

A Modular Design System that allows individual modules to be fitted out to meet custom requirements, then added or rearranged as needed.

These and our other 'Modular' models are Ideally suited in the design of RESORTS and HOLIDAY PARKS. Or for re-inventing Van Parks as Affordable Housing Projects Design and Site specific layouts can be prepared for a variety of accommodation yields and DA submissions

MODULAR ... ADD ON SYSTEM Pavilion Style

Module 2

Surf Shack

MODULAR ... ADD ON SYSTEM

ADD additional Modules as needed
Module's can be fitted out for:
A Weekender, An Extra Bedroom
A Tourist Cabin, A Granny Flat
A Starter Home, A Rural retreat
Or?

For Example: Module 1

Can be used as a stand alone 'BEDSIT'
or combined with additional Modules
It Has High ceilings. Bifold doors are an
option and Decks can be added, Covered
and/or Screened, as needed

ADD a **BREEZEWAY** with carbon fibre
roofing and a Deck, between The
Modules, to form a natural Sunroom
and an **ENTRY** Point

STOCK Plan

anstey
homes

All Plans Copyright 2023





Module 1

Fitted Out As
LIVING SPACE



Module 1

Fitted Out As
A BED-SIT

STOCK Plan
an stey
homes

All Plans Copyright 2023



Module 2



Module 3



STOCK Plan

an
stey
homes

All Plans Copyright 2023



Anstey Homes

Nth NSW

www.ansteyhomes.com

Ph: 0266809333 m:0455039675

m:0428666425



PLANS in this Brochure

Are Free of charge to

'not for profit' housing

and

for Individuals 'In need'

Contact us for Details of this offer