

'lifestyle'

BEACH HOMES

anstey
homes

Licence No: 238408C

Beech Lane

Model 1,3



A 3 Bedroom HOME

Floor Area 375 m²

Length: 33,5 m

Width: 11,3 m





Beech Lane

Model 1.3

An ENVIRO-SOLAR Home

Utilising our ENERGY PACK technologies

- Home Solar Power System: 10kw.
- Reduced Air Loss = Reduced Energy Use, by Improving air seals in the building 'wrap'
- Thermal mass and controlled air / sun access
- Special reflective and conductive insulations.
- An Electric Storage Hot Water System Powered directly from the Solar Array



LOTS: 14.5 m wide *

* Council Height Planes may EXCEED 1.5m



Beaches

Model 2.4



All Plans Copyright 2023

LOTS: 14.5 m wide *

Beaches

Model 2.4 bedroom



Floor Area: 240 m²

Length: 13.7 m Width: 12.3 m

Licence No: 238408C



STOCK PLAN



All Plans Copyright 2023

Beaches

Model 17, 3 bedroom



2021
MASTER BUILDERS ASSOCIATION OF NSW Pty Ltd
Northern Regions
EXCELLENCE IN HOUSING AWARDS
WINNER
Exhibition Homes
Over \$500,000
Beaches Display House, East Ballina NSW
ANSTEY HOMES

LOTS: 16.2 m wide *

STOCK PLAN



* Setbacks to meet BCA 1.5m to Upper Fl - Council Height Planes may EXCEED 1.5m

LOTS: 16.2 m wide *

Beaches

Model 17.3 bedroom



Fl Area: 245 m²
Length: 15.0 m
Width: 14.4 m

* Council Height Planes may EXCEED 1.5m



STOCK PLAN





Salt

Model X1.4

An ENVIRO-SOLAR Home

Utilising our ENERGY PACK technologies

- Home Solar Power System: 10kw.
- Reduced Air Loss = Reduced Energy Use, by Improving air seals in the building 'wrap'
- Thermal mass and controlled air / sun access
- Special reflective and conductive insulations.
- An Electric Storage Hot Water System Powered directly from the Solar Array

Salt

Model X1,4

A 4 Bedroom HOME



Floor Area: 291 m²

Length: 20,9 m

Width: 12,6 m

BESPOKE Plan



All Plans Copyright 2019



Seychelles

Model 1.5

An ENVIRO-SOLAR Home

Utilising our ENERGY PACK technologies

- Home Solar Power System: 10kw.
- Reduced Air Loss = Reduced Energy Use, by Improving air seals in the building 'wrap'
- Thermal mass and controlled air / sun access
- Special reflective and conductive insulations.
- An Electric Storage Hot Water System Powered directly from the Solar Array

Seychelles

Model 1.5

A 5 Bedroom HOME

Floor Area: 323 m²

Length: 23.3 m Width: 10.7 m



STOCK PLAN





Seaside

Model X 4.4





Seaside

Model X 4.4



Floor Area: 349m²

Length: 22.2 m Width: 14.5 m

A 4 bedroom Home with High Ceilings





Seaside

Model 3,4

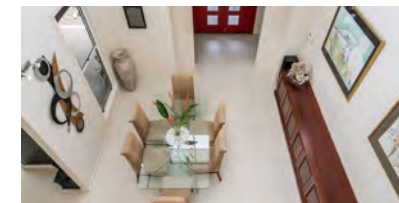


Seaside

Model 3.4



A 3 Bedroom HOME



Area: 215.8m²

Length: 15.9 m

Width: 15.4 m

Lot Width: 17.2 m

Lot Depth: 24.0 m

STOCK PLAN



All Plans Copyright 2020



Kingscliff

Model 1.5

An ENVIRO-SOLAR Home

Utilising our ENERGY PACK technologies

- Home Solar Power System: 10kw.
- Reduced Air Loss = Reduced Energy Use, by Improving air seals in the building 'wrap'
- Thermal mass and controlled air / sun access
- Special reflective and conductive insulations.
- An Electric Storage Hot Water System Powered directly from the Solar Array



 **2005**
MASTER BUILDERS ASSOCIATION OF NSW Pty Ltd
EXCELLENCE IN HOUSING AWARDS
WINNER
EXHIBITION HOMES
over \$350,000
SANDPIPER
Phil ANSTEY Designer HOMES

Sandpiper
CALIFORNIAN

Sandpiper

Model: Californian



A 5 Bedroom HOME



Floor Area: 407 m²

Length: 22.2m Width: 15.3m

MBA AWARDS Best Exhibition Home NSW 2005



STOCK PLAN



All Plans Copyright 2019

S.E. Queensland



Anstey Homes

www.ansteyhomes.com

Ph: 0266809333 m:0455039675
m:0428666425

Northern NSW



Anstey Homes

www.ansteyhomes.com

Ph: 0266809333 m:0455039675
m:0428666425