



Storey HOMES



'Enviro Solar Homes ... by design

anstey
homes

Licence No: 238408C



Cabarita

Model 3.6

An ENVIRO-SOLAR Home

Utilising our ENERGY PACK technologies

- Home Solar Power System: 3kw > 10kw
- Reduced Air Loss = Reduced Energy Use, by Improving air seals in the building 'wrap'
- Thermal mass and controlled air / sun access
- Special reflective and conductive insulations.
- Hot Water Powered from the Solar Array



Cabarita

Model 3.6



A 6 Bedroom HOME



Area: 434.m²

Length: 23.7 m

Width: 14.5 m

Lot Width: 16.3 m

Lot Depth: 34.0 m

Bespoke PLAN



All Plans Copyright 2020



Cottonwood

Model 1.4

An ENVIRO-SOLAR Home

Utilising our ENERGY PACK technologies

- Home Solar Power System: 3kw > 10kw
- Reduced Air Loss = Reduced Energy Use, by Improving air seals in the building 'wrap'
- Thermal mass and controlled air / sun access
- Special reflective and conductive insulations.
- Hot Water Powered from the Solar Array

Cottonwood

Model 1,4



A 4 Bedroom HOME



Area: 281.0m²

Length: 23.9 m

Width: 12.2 m

Lot Width: 14.0 m

Lot Depth: 38.0 m

STOCK Plan



anste
homes

All Plans Copyright 2020



Salt

Model 8.4

An ENVIRO-SOLAR Home

Utilising our ENERGY PACK technologies

- Home Solar Power System: 3kw > 10kw
- Reduced Air Loss = Reduced Energy Use, by Improving air seals in the building 'wrap'
- Thermal mass and controlled air / sun access
- Special reflective and conductive insulations.
- Hot Water Powered from the Solar Array



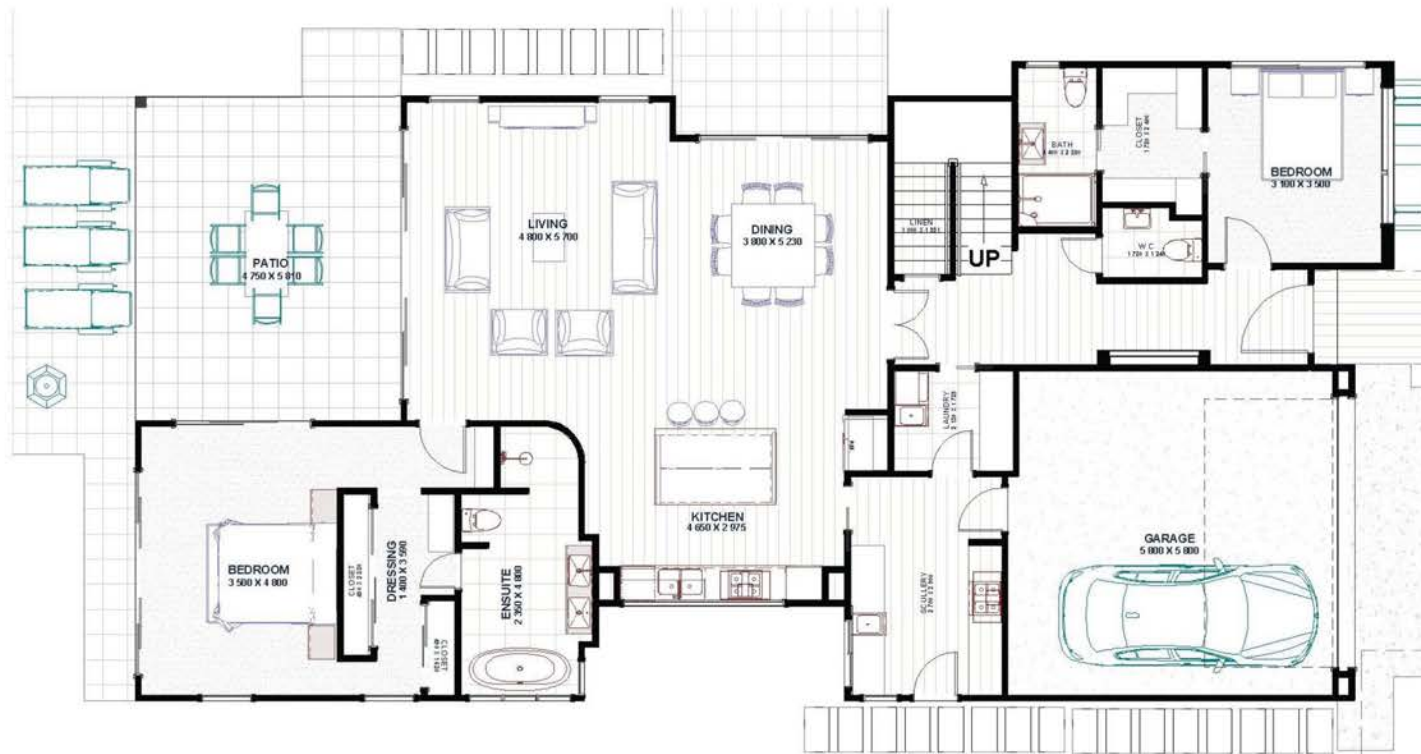
Salt

Model 8.4



A 4 Bedroom HOME

Area: 299.0m²
 Length: 22.5 m
 Width: 11.2 m
 Lot Width: 13.0 m
 Lot Depth: 32.5 m





Aurius

Model 1.5

An ENVIRO-SOLAR Home

Utilising our ENERGY PACK technologies

- Home Solar Power System: 10kw.
- Reduced Air Loss = Reduced Energy Use, by Improving air seals in the building 'wrap'
- Thermal mass and controlled air / sun access
- Special reflective and conductive insulations.
- Hot Water Powered from the Solar Array

Aurius

Model 1.5



A 5 Bedroom HOME



Area: 263. m²

Length: 23.2 m

Width: 13.6 m

Lot Width: 16.0 m

Lot Depth: 30.0 m

STOCK Plan



All Plans Copyright 2020



Cudgen

Model 2.4

An ENVIRO-SOLAR Home

Utilising our ENERGY PACK technologies

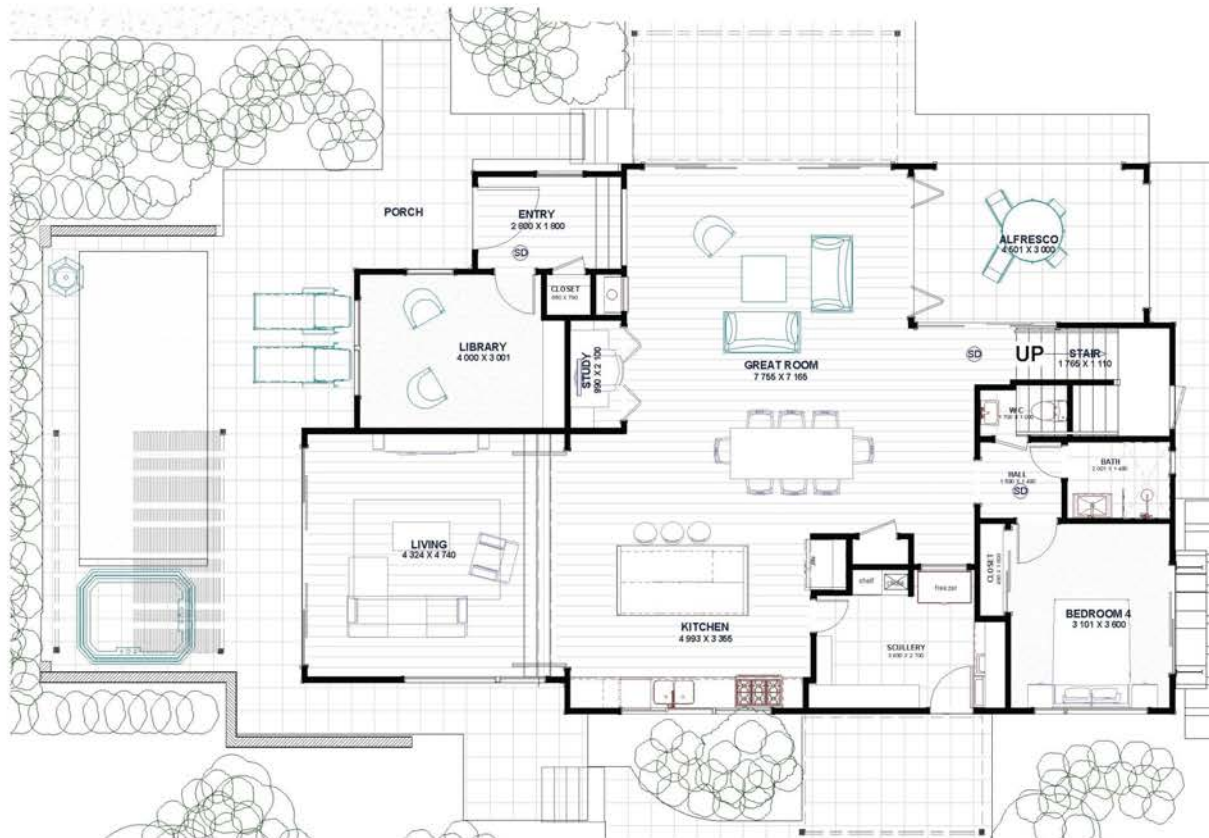
- Home Solar Power System: 10kw.
- Reduced Air Loss = Reduced Energy Use, by Improving air seals in the building 'wrap'
- Thermal mass and controlled air / sun access
- Special reflective and conductive insulations.
- Hot Water Powered from the Solar Array

Cudgen

Model 2.4



A 4 Bedroom HOME



Area: 350. m²

Length: 22.2 m

Width: 14.5 m

Lot Width: 17.5 m

Lot Depth: 35.0 m

CUSTOM Plan



All Plans Copyright 2019

An ENVIRO-SOLAR Home

utilising our ENERGY PACE technologies

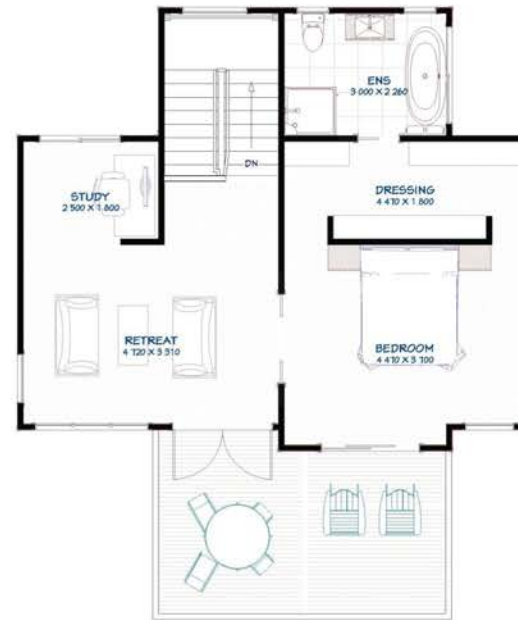
Koala

Model 14.4



Koala

Model 14.4



A 4 Bedroom HOME

Area: 307.m²
Length: 25.0 m
Width: 17.0 m
Lot Width: 27.0m
Lot Depth: 27.0m

StTOCK Plan



All Plans Copyright 2019



Licence No: 238408C

Bullinah

Model 1.5

An ENVIRO-SOLAR Home

Utilising our ENERGY PACK technologies

- Home Solar Power System: 3kw > 10kw
- Reduced Air Loss = Reduced Energy Use, by Improving air seals in the building 'wrap'
- Thermal mass and controlled air / sun access
- Special reflective and conductive insulations.
- Hot Water Powered from the Solar Array

Bullinah

Model 1.5



A 3 Bedroom HOME
plus 2 Bedroom Flat

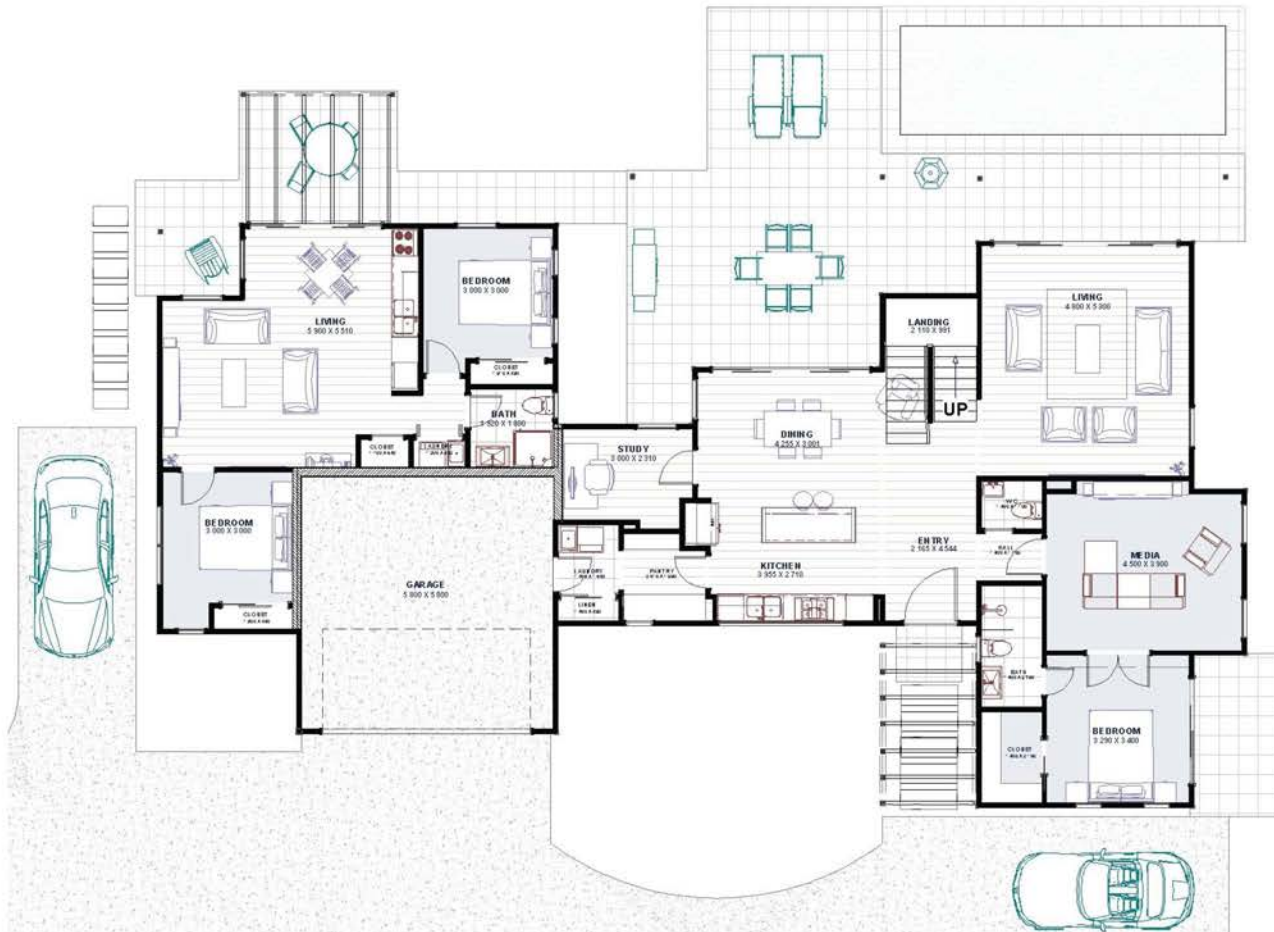
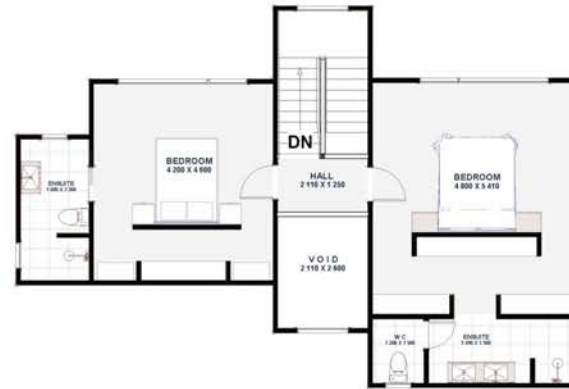
Area: 326.m²
 Length: 25.1 m
 Width: 14.4 m
 Lot Width: 25.0 m
 Lot Depth: 35.0 m



Bespoke Plan



All Plans Copyright 2020





Sailfish

Model 1.4

An ENVIRO-SOLAR Home

Utilising our ENERGY PACK technologies

- Home Solar Power System: 3kw > 10kw
- Reduced Air Loss = Reduced Energy Use, by Improving air seals in the building 'wrap'
- Thermal mass and controlled air / sun access
- Special reflective and conductive insulations.
- Hot Water Powered from the Solar Array



Sailfish

Model 1.4



A 3 Bedroom HOME



Area: 249.0m²

Length: 16.0 m

Width: 13.5 m

Lot Width: 18.5 m

Lot Depth: 20.0 m

BESPOKE Plan



All Plans Copyright 2020



An 'Original Anstey Design'



Licence No: 238408C

Banyon

Model 1,4

An ENVIRO-SOLAR Home

Utilising our ENERGY PACK technologies

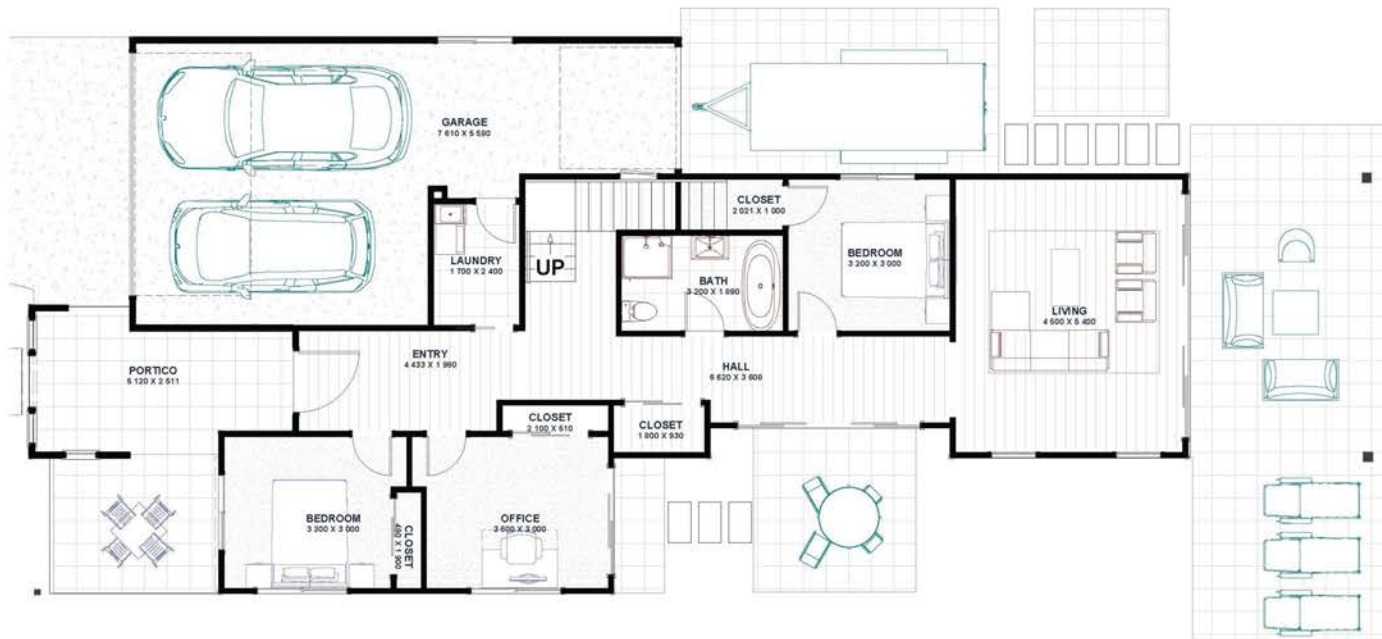
- Home Solar Power System: 3kw > 10kw
- Reduced Air Loss = Reduced Energy Use, by Improving air seals in the building 'wrap'
- Thermal mass and controlled air / sun access
- Special reflective and conductive insulations.
- Hot Water Powered from the Solar Array

Banyon

Model 1.4



A 4 Bedroom HOME



Area: 314.0m²
 Length: 26.8 m
 Width: 11.9 m
 Lot Width: 13.5 m
 Lot Depth: 35.0 m



Bespoke Plan





Licence No: 238408C

Coast

Model 1.5 Gable Version

An ENVIRO-SOLAR Home

Utilising our ENERGY PACK technologies

- Home Solar Power System: 3kw > 10kw
- Reduced Air Loss = Reduced Energy Use, by Improving air seals in the building 'wrap'
- Thermal mass and controlled air / sun access
- Special reflective and conductive insulations.
- Hot Water Powered from the Solar Array

Coast

Model 1.5



A 5 Bedroom HOME

Area: 195.0m²
Length: 16.2m
Width: 10.2m
Lot Width: 19.0m
Lot Depth: 14.5m





An 'Original Anstey Design'



Fingal

Model 1.4

An ENVIRO-SOLAR Home

Utilising our ENERGY PACK technologies

- Home Solar Power System: 3kw > 10kw
- Reduced Air Loss = Reduced Energy Use, by Improving air seals in the building 'wrap'
- Thermal mass and controlled air / sun access
- Special reflective and conductive insulations.
- Hot Water Powered from the Solar Array

Fingal

Model 1.4



A 4 Bedroom HOME



Area: 372.0m²

Length: 31.7 m

Width: 15.5 m

Lot Width: 17.3 m

Lot Depth: 40.0 m

STOCK PLAN



All Plans Copyright 2020



Anstey Homes

www.ansteyhomes.com

Ph: 0266809333 m:0455039675

m:0428666425



Northern NSW



S.E. Queensland