

# 2 Storey HOMES

For 14m+ wide Lots





# Q building

## Model 1.4

An ENVIRO-SOLAR Home

Utilising our ENERGY PACK technologies

- Home Solar Power System: 3kw > 10kw
- Reduced Air Loss = Reduced Energy Use, by Improving air seals in the building 'wrap'
- Thermal mass and controlled air / sun access
- Special reflective and conductive insulations.
- Hot Water Powered from the Solar Array





# Q building

Model 1.4



A 4 Bedroom HOME



Area: 240.m<sup>2</sup>

Length: 23.0 m

Width: 12.1 m

Lot Width: 14.0 m

Lot Depth: 32.0 m



All Plans Copyright 2020



# Altitude

Model 1.5



A 4 Bedroom HOME  
Plus Granny Flat

# Altitude

Model 1.5



Area: 434. m2

Length: 24.5 m

Width: 16.7 m

Lot Width: 18.0 m

Lot Depth: 35.0 m



STOCK PLAN



All Plans Copyright 2020



STOCK PLAN



# Casa

## Model 2.4

### An ENVIRO-SOLAR Home

Utilising our ENERGY PACK technologies

- Home Solar Power System: 6kw.
- Reduced Air Loss = Reduced Energy Use, by Improving air seals in the building 'wrap'
- Thermal mass and controlled air / sun access
- Special reflective and conductive insulations.
- Hot Water Powered from the Solar Array

# A 4 Bedroom HOME

2.7m High Ground floor Ceilings (2.6m 1st Floor) and 2.4m External Doors/Windows

# Casa

Model 2,4



Floor Area: 254 m<sup>2</sup>

Length: 15.4m Width: 12.3 m

STOCK PLAN



All Plans Copyright 2023

# Chalet

Model 3.2





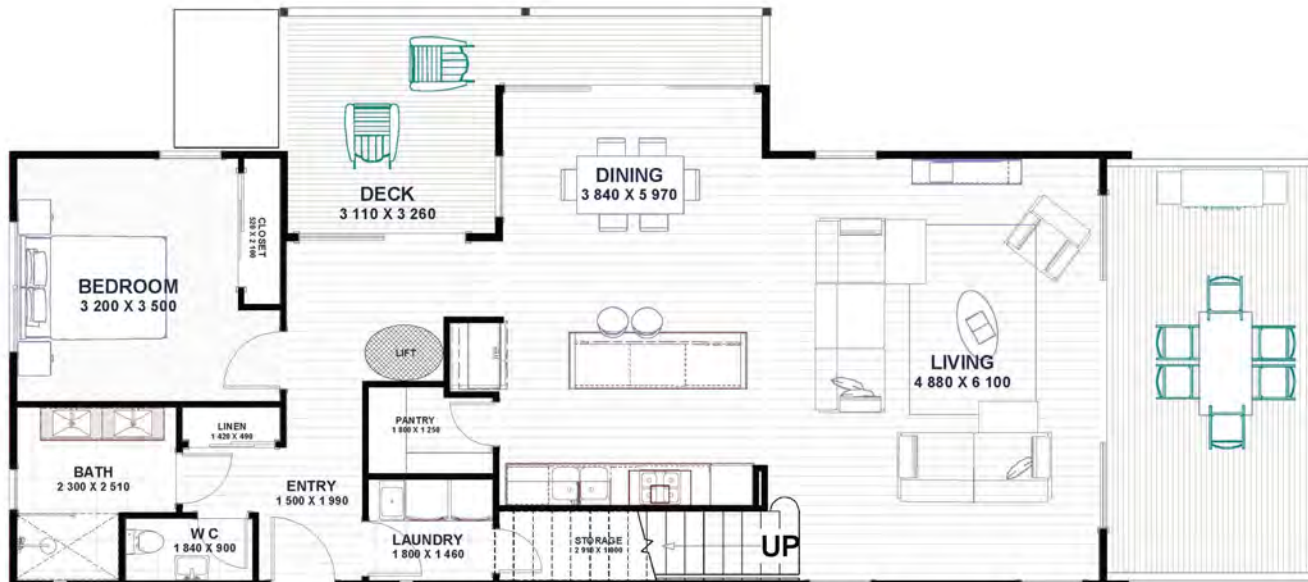
# Chalet

Model 3.2

A 2-3 Bedroom HOME



2.7m High Ground floor Ceilings (2.6m 1st Floor) and 2.4m External Doors/Windows



Floor Area 199m<sup>2</sup>

Length: 19.0 m

Width: 8.4m

STOCK PLAN



All Plans Copyright 2023



# Salt

## Model 8.4

**An ENVIRO-SOLAR Home**

**Utilising our ENERGY PACK technologies**

- Home Solar Power System: 3kw > 10kw
- Reduced Air Loss = Reduced Energy Use, by Improving air seals in the building 'wrap'
- Thermal mass and controlled air / sun access
- Special reflective and conductive insulations.
- Hot Water Powered from the Solar Array

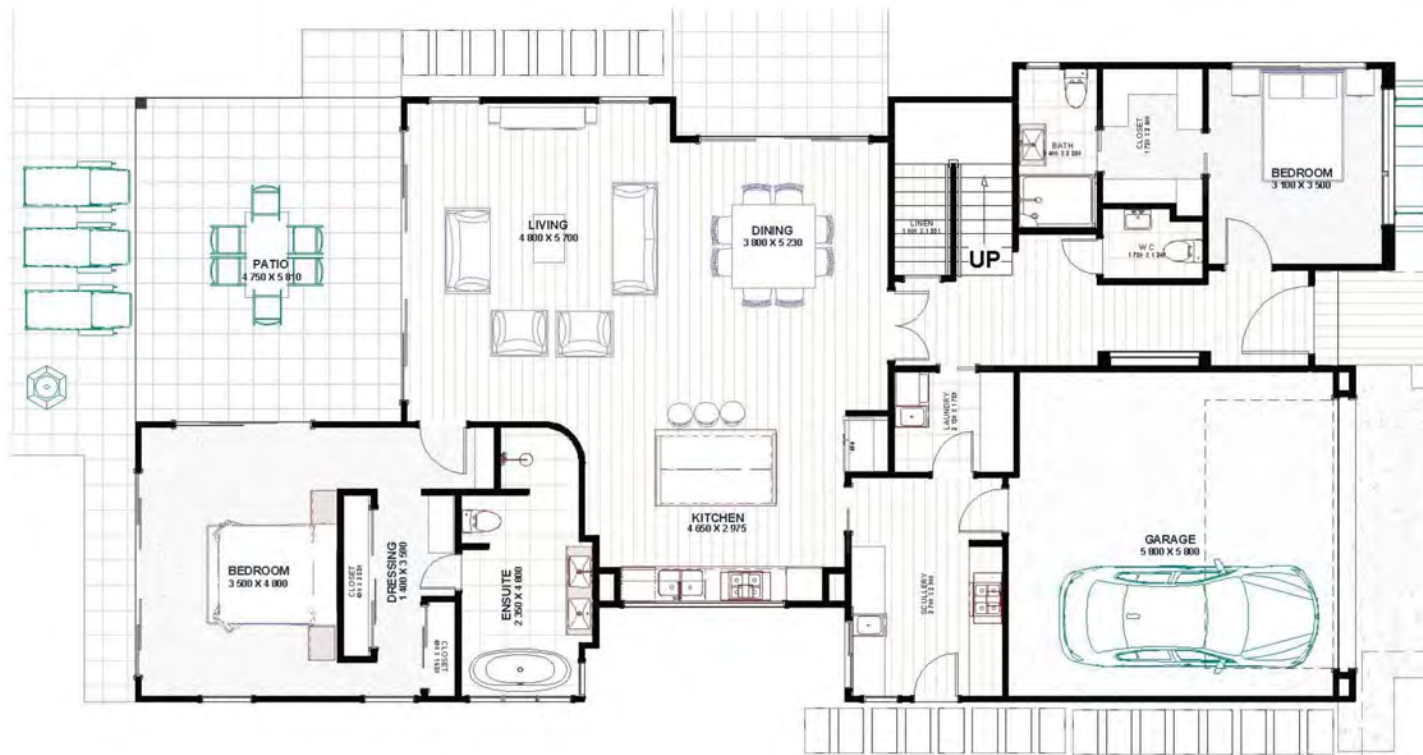


# Salt

Model 8.4



## A 4 Bedroom HOME



Area: 299.0m<sup>2</sup>  
 Length: 22.5 m  
 Width: 11.2 m  
 Lot Width: 13.0 m  
 Lot Depth: 32.5 m



Bespoke Plan





# Aurius

## Model 1.5

An ENVIRO-SOLAR Home

Utilising our ENERGY PACK technologies

- Home Solar Power System: 10kw.
- Reduced Air Loss = Reduced Energy Use, by Improving air seals in the building 'wrap'
- Thermal mass and controlled air / sun access
- Special reflective and conductive insulations.
- Hot Water Powered from the Solar Array

# Aurius

Model 1.5



A 5 Bedroom HOME



Area: 263, m<sup>2</sup>  
 Length: 23,2 m  
 Width: 13,6 m  
 Lot Width: 16,0 m  
 Lot Depth: 30,0 m

STOCK Plan



All Plans Copyright 2020

# Coastal

Model 1.4



An ENVIRO-SOLAR Home

Utilising our ENERGY PACK technologies



# Coastal

Model 1.4



A 4 Bedroom HOME

Area: 364.m<sup>2</sup>

Length: 18.9 m

Width: 13.3 m

Lot Width: 15.7 m

Lot Depth: 29.0 m



All Plans Copyright 2020



# Cabarita

## Model 3.6

An ENVIRO-SOLAR Home

Utilising our ENERGY PACK technologies

- Home Solar Power System: 3kw > 10kw
- Reduced Air Loss = Reduced Energy Use, by Improving air seals in the building 'wrap'
- Thermal mass and controlled air / sun access
- Special reflective and conductive insulations.
- Hot Water Powered from the Solar Array



# Cabarita

Model 3.6



A 6 Bedroom HOME



Area: 434.m2

Length: 23.7 m

Width: 14.5 m

Lot Width: 16.3 m

Lot Depth: 34.0 m

Bespoke PLAN



All Plans Copyright 2020



# Cudgen

## Model 2.4

An ENVIRO-SOLAR Home

Utilising our ENERGY PACK technologies

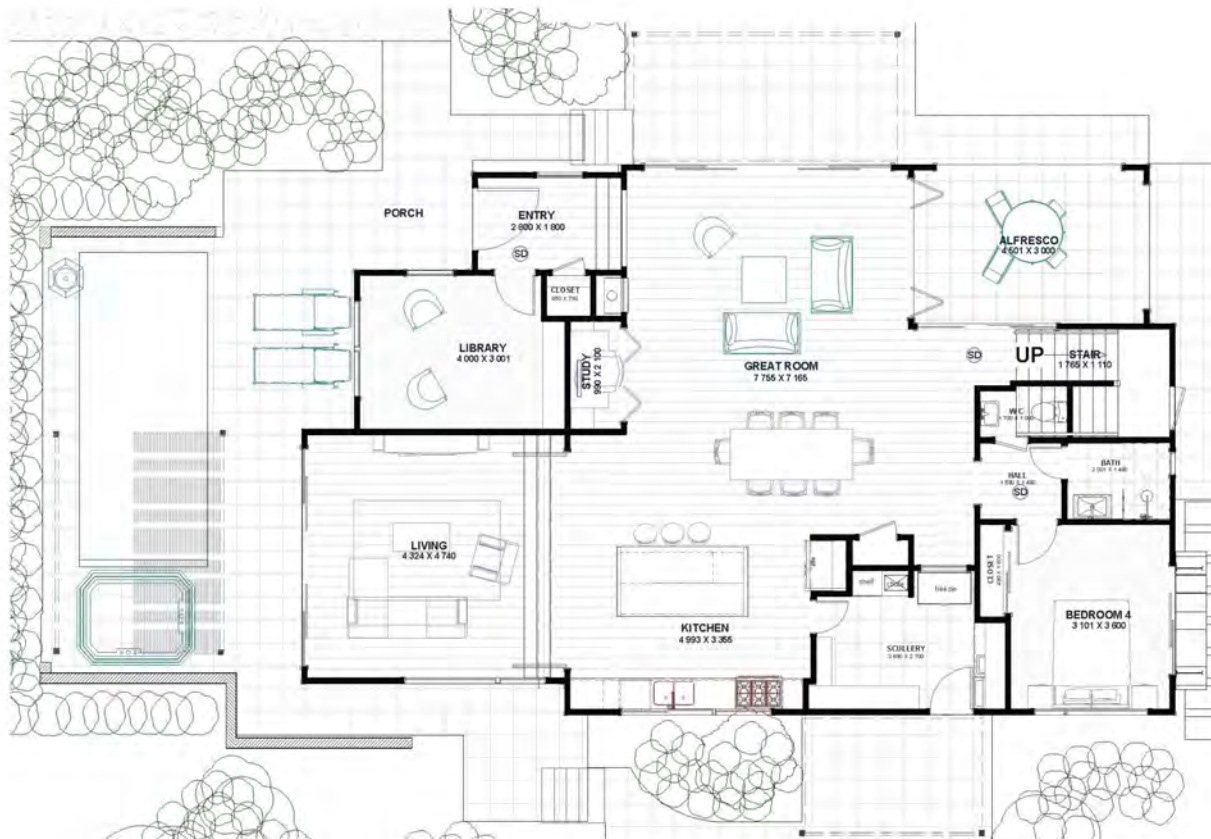
- Home Solar Power System: 10kw.
- Reduced Air Loss = Reduced Energy Use, by Improving air seals in the building 'wrap'
- Thermal mass and controlled air / sun access
- Special reflective and conductive insulations.
- Hot Water Powered from the Solar Array

# Cudgen

Model 2.4



A 4 Bedroom HOME



Area: 350. m<sup>2</sup>

Length: 22.2 m

Width: 14.5 m

Lot Width: 17.5 m

Lot Depth: 35.0 m

CUSTOM Plan



All Plans Copyright 2019



Licence No: 238408C

# Coast

Model 1.5 Gable Version

An ENVIRO-SOLAR Home

Utilising our ENERGY PACK technologies

- Home Solar Power System: 3kw > 10kw
- Reduced Air Loss = Reduced Energy Use, by Improving air seals in the building 'wrap'
- Thermal mass and controlled air / sun access
- Special reflective and conductive insulations.
- Hot Water Powered from the Solar Array

# Coast

Model 1.5



A 5 Bedroom HOME



Area: 195.0 m<sup>2</sup>

Length: 16.2 m

Width: 10.2 m

Lot Width: 19.0 m

Lot Depth: 14.5 m



STOCK Plan



An ENVIRO-SOLAR Home

Utilising our ENVIRO-PASS technologies

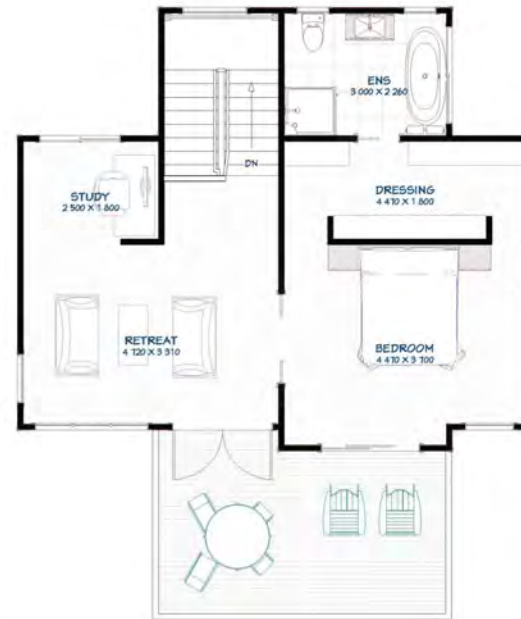
# Koala

Model 14.4



# Koala

Model 14.4



A 4 Bedroom HOME

Area: 307.m<sup>2</sup>  
Length: 25.0 m  
Width: 17.0 m  
Lot Width: 27.0 m  
Lot Depth: 27.0 m

StTOCK Plan



All Plans Copyright 2019



## Anstey Homes

[www.ansteyhomes.com](http://www.ansteyhomes.com)

Ph: 0266809333 m:0455039675

m:0428666425



### Northern NSW



### S.E. Queensland