

*'Affordable homes' ... by design*



Homes for :



Small Sites



An 'Original' Anstey Design with 2.6m High ceilings

# Seaside

Model 9.3

An ENVIRO-SOLAR Home

Utilising our ENERGY PACK technologies

- Home Solar Power System: 3kw > 10kw
- Reduced Air Loss = Reduced Energy Use, by Improving air seals in the building 'wrap'
- Thermal mass and controlled air / sun access
- Special reflective and conductive insulations.
- An Electric Storage Hot Water System Powered directly from the Solar Array



Licence No: 238408C



A 3 Bedroom HOME

# Seaside

Model 9.3



Floor Area: 140 m<sup>2</sup>

Length: 17.05 m Width: 8.5 m

Designed for a Small Site

Minimum: 250 m<sup>2</sup> frontage: 10.3 m



Stock Plan



All Plans Copyright 2020



# Avalon

## Model 2.3

An ENVIRO-SOLAR Home

Utilising our ENERGY PACK technologies

- Home Solar Power System: 3kw > 10kw
- Reduced Air Loss = Reduced Energy Use, by Improving air seals in the building 'wrap'
- Thermal mass and controlled air / sun access
- Special reflective and conductive insulations.
- Hot Water Powered from the Solar Array

# A Three Bedroom SINGLE LEVEL Home

# Avalon

Model 2.3



Floor Area: 122m<sup>2</sup>

Length: 16.2 m Width: 9.0 m

Designed for a Small Site

Minimum: 250 m<sup>2</sup> frontage: 10.0 m



All Plans Copyright 2017





# Glenwood

## Model 3.3

An ENVIRO-SOLAR Home

Utilising our ENERGY PACK technologies

- Home Solar Power System: 3kw > 10kw
- Reduced Air Loss = Reduced Energy Use, by Improving air seals in the building 'wrap'
- Thermal mass and controlled air / sun access
- Special reflective and conductive insulations.
- Hot Water Powered from the Solar Array



# Glenwood

Model 3.3

Designed for a Small Site

Minimum: 275 m<sup>2</sup> frontage: 12.6 m

## A Three Bedroom HOME

Floor Area: 136 m<sup>2</sup>

Length: 15.7 m Width: 11.2 m

Practical 3 bedroom Home with :  
 A Country Style Kitchen, 2 Bathrooms  
 A Single Garage, ( double available )  
 High Ceilings, LED Lighting  
 Timber vinyl flooring to living areas  
 with Carpet to bedrooms  
 and a Roof over the rear Patio Area.

Fits a min. 12.6 m wide Lot



All Plans Copyright 2017





# Seaside

## Model 2.2

An ENVIRO-SOLAR Home

Utilising our ENERGY PACK technologies

- Home Solar Power System: 3kw > 10kw
- Reduced Air Loss = Reduced Energy Use, by Improving air seals in the building 'wrap'
- Thermal mass and controlled air / sun access
- Special reflective and conductive insulations.
- Hot Water Powered from the Solar Array



# Seaside

Model 2.2

A Two Bedroom HOME

Floor Area: 167 m<sup>2</sup>

Length: 20.1 m Width: 11.3 m

A Two bed Home with high and raked  
Ceilings and clerestory windows

On slab construction is the base price



All Plans Copyright 2017



# Mirramar

## Model 4.3

An ENVIRO-SOLAR Home

Utilising our ENERGY PACK technologies

- Home Solar Power System: 3kw > 10kw
- Reduced Air Loss = Reduced Energy Use, by Improving air seals in the building 'wrap'
- Thermal mass and controlled air / sun access
- Special reflective and conductive insulations.
- Hot Water Powered from the Solar Array



# Mirramar

Model 4.3



Designed for a Small Site

Minimum: 345 m<sup>2</sup> frontage: 12.6 m

Floor Area: 173 m<sup>2</sup>

Length: 18.7 m Width: 11.2 m

A 3 bedroom Home with High Ceilings

Bedroom shown with Queen size bed

Includes Patio and Porch Roofs

Floor Finishes are Carpet and Timber  
vinyl plank Flooring

Fits a min. 12.6m wide lot



All Plans Copyright 2017



An 'Original Anstey Design'



# Cylinders

## Model 7.3

An ENVIRO-SOLAR Home

Utilising our ENERGY PACK technologies

- Home Solar Power System: 3kw > 10kw
- Reduced Air Loss = Reduced Energy Use, by Improving air seals in the building 'wrap'
- Thermal mass and controlled air / sun access
- Special reflective and conductive insulations.
- Hot Water Powered direct from the Solar Array



# Cylinders

Model 7.3



Area: 171.0m<sup>2</sup>

Length: 30.6 m

Width: 7.5 m

Lot Width: 10.0 m

Lot Depth: 37.0 m



A Three Bedroom HOME

STOCK Plan



an stey  
homes

All Plans Copyright 2020



# Mews

Model X 8.2

Contemporary design with High ceilings that suits a lot with dual access

(The Entry can be modified to arrive from the Garage side.)

As with all designs the roof style is optional, typically Gable or Skillion.



Area: 197.0m<sup>2</sup>

Length: 28.0m

Width: 10.0m

Lot Width: 12.0m

Lot Depth: 35.0m

# Mews

Model X8.2



## A 2 Bedroom HOME

Contemporary design with High ceilings  
that designed for a lot that has dual access  
However The Entry can be modified to  
arrive from the Garage side.

Designed for a Small Site

Minimum: 350m<sup>2</sup> frontage: 12.0m

STOCK Plan



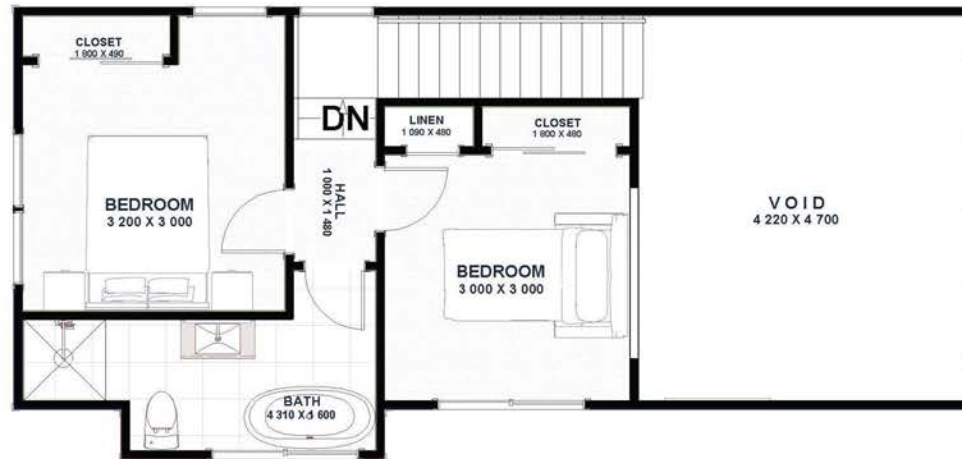
All Plans Copyright 2020



Chalet  
Model 2,3







# Chalet

Model 2.3

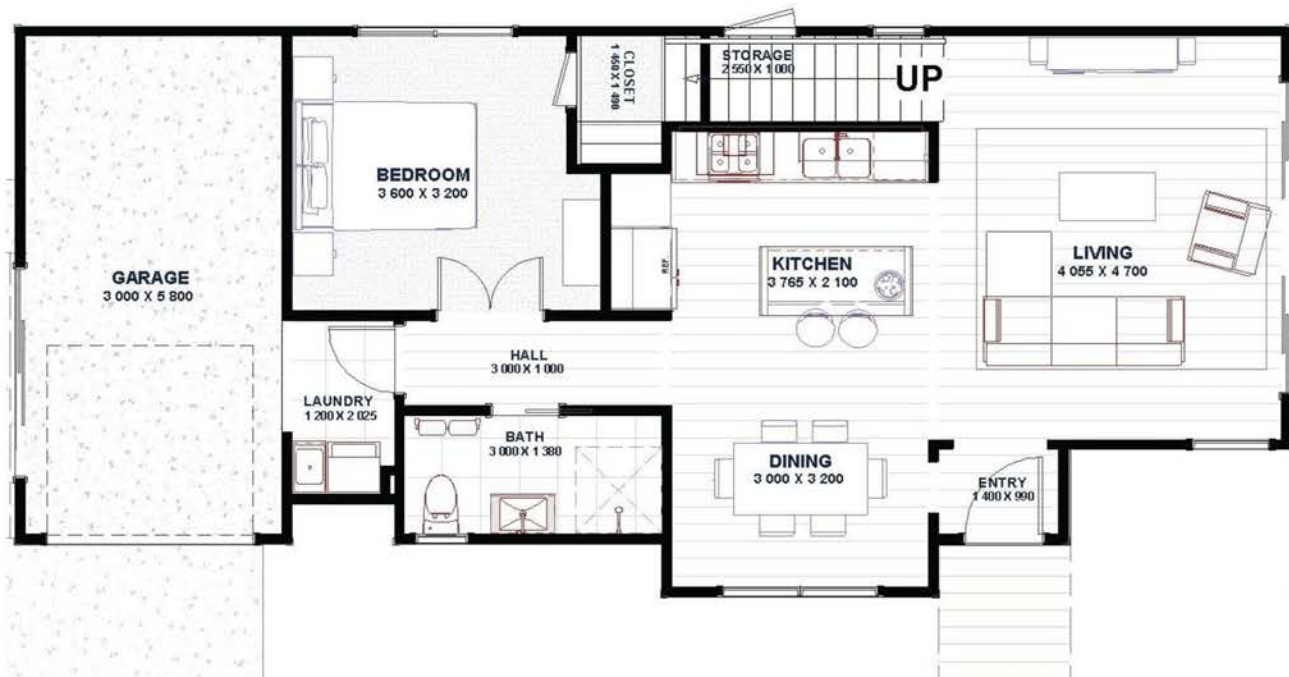
A 3 Bedroom HOME

Floor Area: 122 m<sup>2</sup>

Length: 15.0 m Width: 6.7 m

Designed for a Small Site

Minimum: 200 m<sup>2</sup> Depth: 8.5 m



STOCK Plan



All Plans Copyright 2017



An 'Original Anstey Design'



# Newport

## Model 4.3

An ENVIRO-SOLAR Home

Utilising our ENERGY PACK technologies

- Home Solar Power System: 10kw.
- Reduced Air Loss = Reduced Energy Use, by Improving air seals in the building 'wrap'
- Thermal mass and controlled air / sun access
- Special reflective and conductive insulations.
- Hot Water Powered from the Solar Array



# Newport

Model 4.3



A 3 Bedroom HOME

Area: 143.0m<sup>2</sup>

Length: 14.0m

Width: 9.8m

Lot Width: 12.5m

Lot Depth: 24.0m



STOCK Plan





## Anstey Homes

Northern NSW



[www.ansteyhomes.com](http://www.ansteyhomes.com)

Ph: 0266809333 m:0455039675

m:0428666425

anstey  
homes