

Not So TINY

# Micro Homes

Collection



Cabins and Modular Homes

'Affordable homes' .....

by design

anstey  
homes



From our **Granny Flats** brochure



Treehouse

Model 1.2

See Unleashed Design  
for a full list of models, features, prices,  
and a full list of locations. See  
Unleashed Design for more information.



Byron  
Model 4.2

From our **Affordable Homes** brochure



Seaview  
Model 1.2

## Unlike Tiny Homes

**Micro Homes** (< 100m<sup>2</sup>) are **real** Homes

They meet the requirements of the Building Code of Australia

and so

**Micro Homes** can be built as **Permanent** Homes

**Micro Homes** are cost effective and environmentally conscious

They do not need an expensive chassis, wheels and floor system

They can be built using a thermal mass concrete floor to help stabilize internal temperatures and reduce energy consumption.

**ADzGN** : offers Modular Homes that can be expanded to accommodate growing families and other household groups.

Please See Our **Modular Homes** in the Micro brochure

and .... 'you want more?'

A range of **very** small homes, (from 24 >60 m<sup>2</sup>)

In our **Granny Flats** and **Micro Homes** brochures





# Cassie 1.1

An ENVIRO-SOLAR Home

Utilising our ENERGY PACK technologies

- Home Solar Power System: 3kw > 10kw
- Reduced Air Loss = Reduced Energy Use, by Improving air seals in the building 'wrap'
- Thermal mass and controlled air / sun access
- Special reflective and conductive insulations.
- Hot Water Powered from the Solar Array

# Cassie 1.1

Cassie is a 29 m<sup>2</sup> home. This is in the 'Tiny' home (size) category

And yet, Cassie is a 'Real' home, that can be built as a Permanent Home, complying with the Building Code of Australia



A 1 Bedroom HOME



Total Area: 29 m<sup>2</sup>  
 Internal Area: 26 m<sup>2</sup>  
 Length: 6.2 m  
 Width: 4.8 m \*

\* Excludes Patios etc



STOCK Plan



All Plans Copyright 2020

Cassie has High ceilings, Is insulated, and has cross flow ventilation.

Cassie comes with built in appliances, all fixtures, fittings and solar power

Cassie can be built modular or transportable with a raised Timber floor



Cassie

Micro

# SERVICES HUB

TYPE TWO







# Bure 1.1

An ENVIRO-SOLAR Home

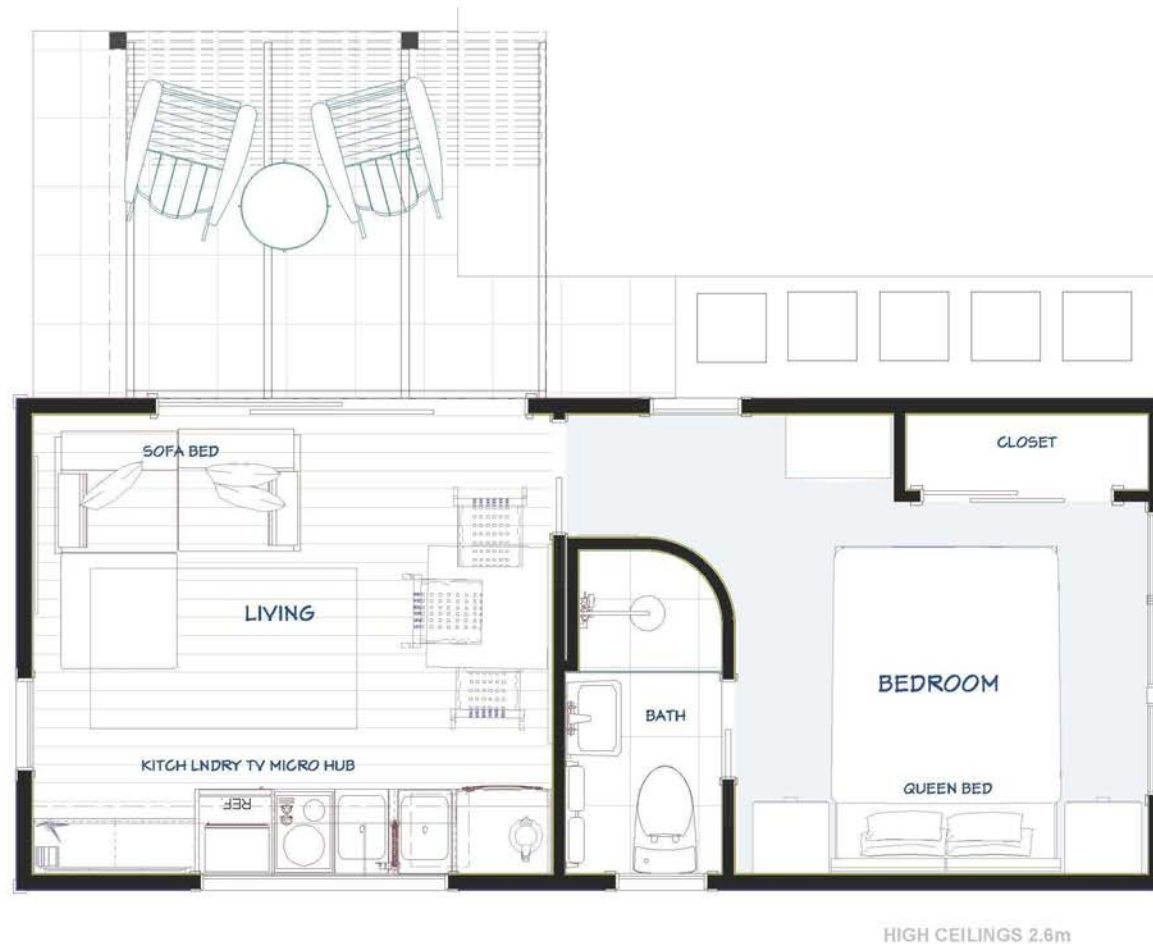
Utilising our ENERGY PACK technologies

- Home Solar Power System: 3kw > 10kw
- Reduced Air Loss = Reduced Energy Use, by Improving air seals in the building 'wrap'
- Thermal mass and controlled air / sun access
- Special reflective and conductive insulations.
- Hot Water Powered from the Solar Array



# Bure 1.1

Bure is a 24 m<sup>2</sup> home. This is also in the 'Tiny' home (size) category  
And yet, Bure is a 'Real' home, that can be built as a Permanent Home,  
Complying, as it does, with the Building Code of Australia



A One Bedroom HOME



Total Area: 24 m<sup>2</sup>  
Internal Area: 24 m<sup>2</sup>  
Length: 7.2 m  
Width: 3.6 m\*

\* Excludes Patios etc



STOCK Plan



All Plans Copyright 2020

Bure has High ceilings, Is insulated, and has cross flow ventilation.  
Bure comes with built in appliances, all fixtures, fittings and solar power  
Bure can be built modular or transportable with a raised Timber floor





# Mila 1.1

An ENVIRO-SOLAR Home

Utilising our ENERGY PACK technologies

- Home Solar Power System: 3kw > 10kw
- Reduced Air Loss = Reduced Energy Use, by Improving air seals in the building 'wrap'
- Thermal mass and controlled air / sun access
- Special reflective and conductive insulations.
- Hot Water Powered from the Solar Array



Mila is a **30m<sup>2</sup>** home. Again this is also in the 'Tiny' home (size) category  
 And yet, Mila is a 'Real' home, that can be built as a Permanent Home,  
 complying with the Building Code of Australia

# Mila 1.1



A 1 Bedroom HOME



Total Area: 39 m<sup>2</sup>  
 Internal Area: 30 m<sup>2</sup>  
 Length: 6.2 m \*  
 Width: 5.0 m \*

\* Excludes Patios etc

Mila has High ceilings, Is insulated, and has cross flow ventilation.  
 Mila comes with built in appliances, all fixtures, fittings and solar power  
 Mila Can be built raised, on timber Joists + Ply sheet + Timber vinyl flooring



STOCK Plan



All Plans Copyright 2020



Mila  
1.1





Mila  
1.1

Micro

# SERVICES HUB

TYPE one





# Cassie

## 2.2

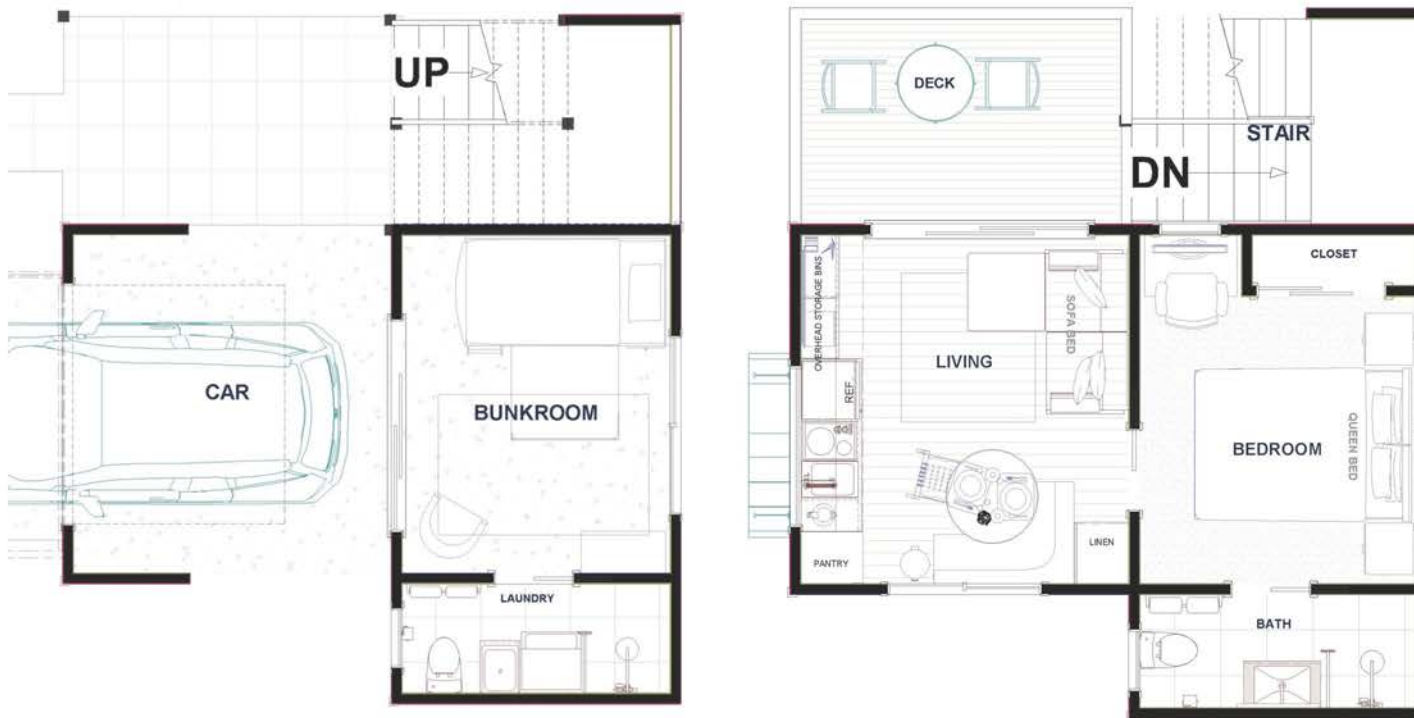




Cassie is a **46 m<sup>2</sup>** home. And complies as a Granny Flat under SEPP No1 NSW

Cassie is a 'Real' home, that can be built as a Permanent Home,  
complying with the Building Code of Australia

# Cassie 2.2



HIGH CEILINGS 2.6m



A 2 Bedroom HOME



Total Area: 59 m<sup>2</sup>  
Internal Area: 46 m<sup>2</sup>  
Length: 6.2 m  
Width: 6.9 m

Cassie has High ceilings, Is insulated, and has cross flow ventilation.

Cassie comes with built in appliances, all fixtures, fittings and solar power



STOCK Plan



All Plans Copyright 2020



An INSPIRING Living Environment

# Habitat 1.1

This Design is for a conventional site where the Living room Glazed Wall and Patio face toward the North

A Single Garage in a similar style is available separately.



Licence No: 238 1080

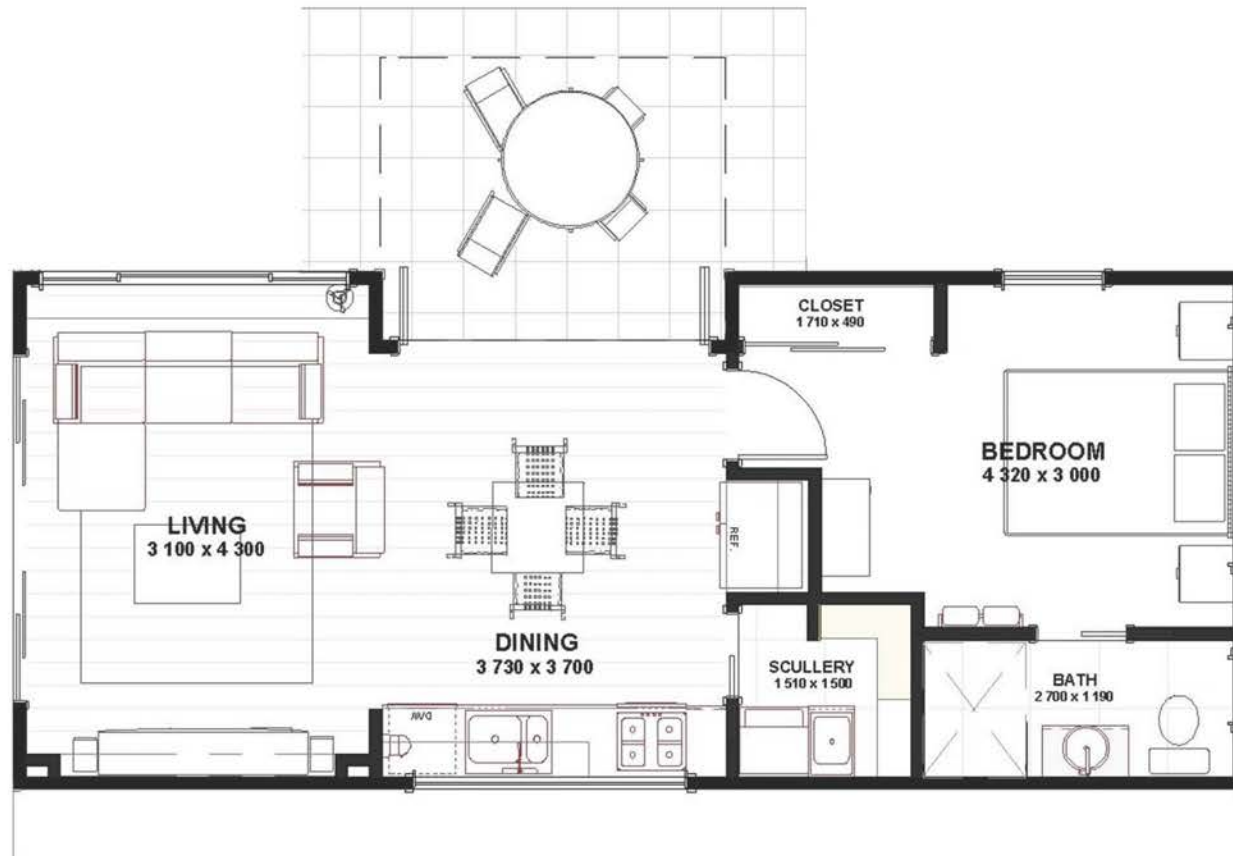


# Habitat 1.1

Habitat is a **47 m<sup>2</sup>** home. And complies as a Granny Flat under SEPP No1 NSW

Habitat is a 'Real' home, that can be built as a Permanent Home, complying with the Building Code of Australia

## A One Bed Home



Total Area: 53 m<sup>2</sup>  
 Internal Area: 47 m<sup>2</sup>  
 Length: 11.4 m \*  
 Width: 4.5 m

\* Excludes Patios etc

### An ENVIRO-SOLAR Home

Utilising our ENERGY PACK technologies

- Home Solar Power System: 3kw > 10kw
- Reduced Air Loss = Reduced Energy Use, by Improving air seals in the building 'wrap'
- Thermal mass and controlled air / sun access
- Special reflective and conductive insulations.
- An Electric Storage Hot Water System Powered directly from the Solar Array

Habitat is a 'full sized' 1 bedroom Home with High ceilings and Lots of Light  
 There is extra storage overhead, above the window, right across the lounge.  
 The Kitchen has: 2 door fridge space, Oven, Cooktop, 2 bowl sink and Scullery



STOCK Plan



All Plans Copyright 2020



# Kara 1.2

An ENVIRO-SOLAR Home

Utilising our ENERGY PACK technologies

- Home Solar Power System: 3kw > 10kw
- Reduced Air Loss = Reduced Energy Use, by Improving air seals in the building 'wrap'
- Thermal mass and controlled air / sun access
- Special reflective and conductive insulations.
- Hot Water Powered from the Solar Array





# Kara 1.2

Kara is a **46 m<sup>2</sup>** home. And complies as a Granny Flat under SEPP No1 NSW

Kara is a 'Real' home, that can be built as a Permanent Home,

complying with the Building Code of Australia, [see also: Kara 3 bed model](#)



HIGH CEILINGS 2.6m



A 2 Bedroom HOME



Total Area: 64 m<sup>2</sup>  
 Internal Area: 56 m<sup>2</sup>  
 Length: 8.9 m \*  
 Width: 6.7 m

\* Excludes Patios etc

Kara has High ceilings, Is insulated, and has cross flow ventilation.

Kara comes with built in appliances, all fixtures, fittings and solar power



STOCK Plan





Kara  
1.2





Micro

# SERVICES HUB

TYPE ONE

PANTRY

DINNERWARE

GLASSES

MUGS

STORAGE BINS

DUCTED RANGEHOOD

INTEGRATED LED LIGHTING

MIXER TAP

4-BURNER COOKTOP

FRIEDER

WASHER / DRYER

TWO SINK TUBS

CUTLERY

FRIEDER

CLEANING WASTE BINS

OVEN

IMPLEMENTS

EGGS

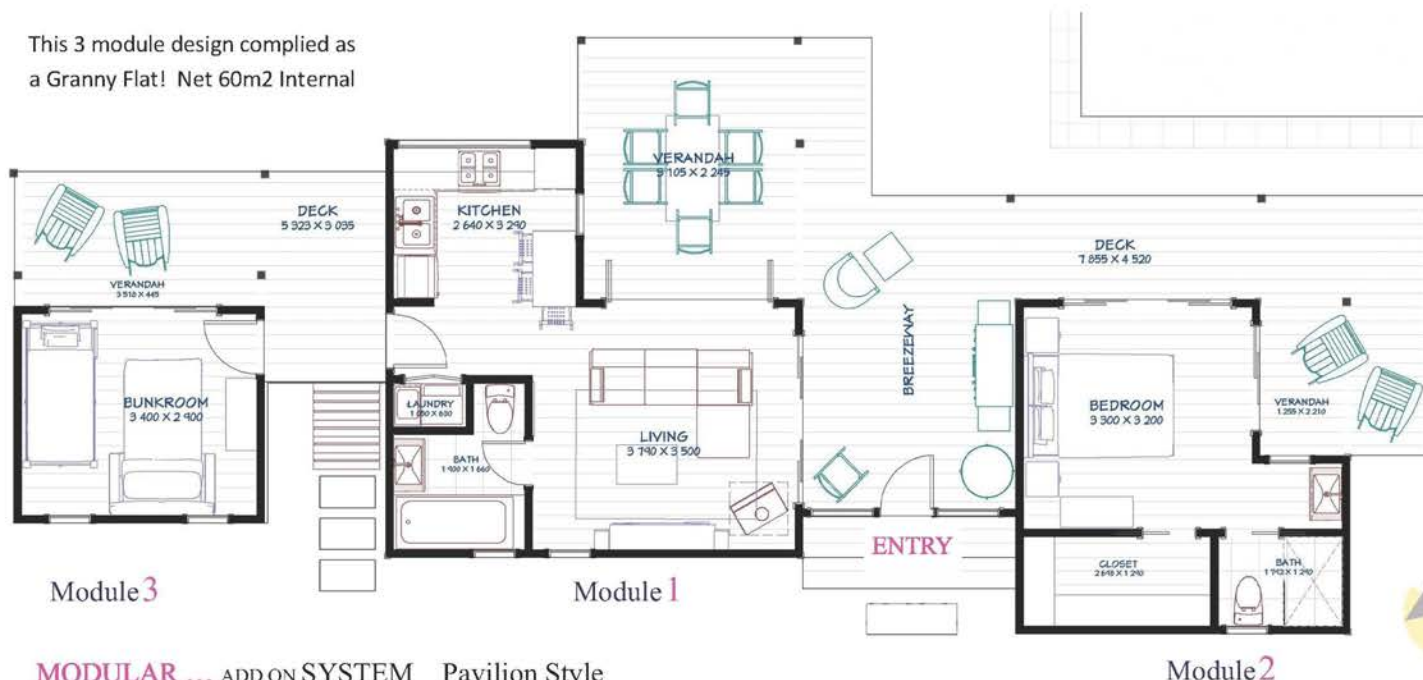
Kara

1.2





This 3 module design complied as  
a Granny Flat! Net 60m2 Internal



# Surf Shack

A Modular Design System  
that allows individual modules to be fitted  
out to meet custom requirements , then  
added or rearranged as needed.

These and our other 'Modular' models are  
Ideally suited in the design of RESORTS  
and HOLIDAY PARKS. Or for re-inventing  
Van Parks as Affordable Housing Projects  
Design and Site specific layouts can be  
prepared for a variety of accommodation  
yields and DA submissions

MODULAR ... ADD ON SYSTEM Pavilion Style

Module 2



# Surf Shack

## MODULAR ... ADD ON SYSTEM

ADD additional Modules as needed

Module's can be fitted out for:

A Weekender, An Extra Bedroom

A Tourist Cabin, A Granny Flat

A Starter Home, A Rural retreat

Or ....?

For Example: Module 1

Can be used as a stand alone 'BEDSIT'

or combined with additional Modules

It Has High ceilings. Bifold doors are an option and Decks can be added, Covered and/or Screened, as needed

ADD a **BREEZEWAY** with carbon fibre roofing and a Deck, between The Modules, to form a natural Sunroom and an **ENTRY** Point

STOCK Plan

an stey  
homes

All Plans Copyright 2020





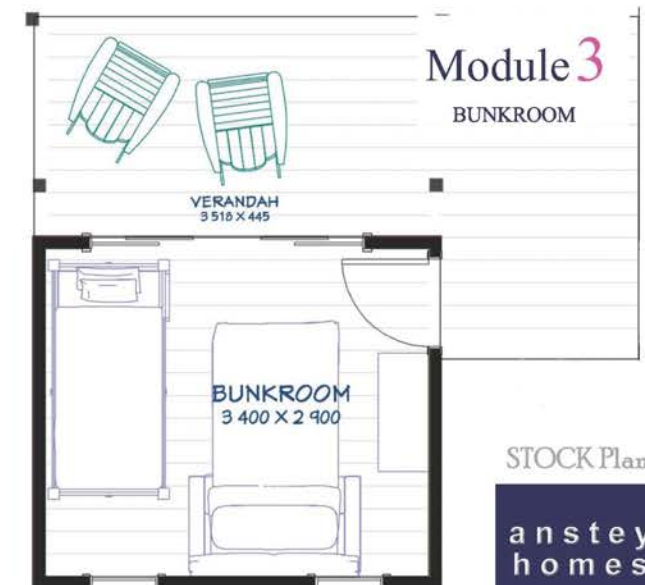




Module 2



Module 3



STOCK Plan

an  
stey  
homes

All Plans Copyright 2020



## Anstey Homes

Nth NSW

[www.ansteyhomes.com](http://www.ansteyhomes.com)

Ph: 0266809333 m:0455039675

m:0428666425



### PLANS in this Brochure

Are Free of charge to  
'not for profit' housing  
and  
for Individuals 'In need'

*Contact us for Details of this offer*